

# Time and Talent 2009/2010

Name: \_\_\_\_\_

## Prayer and Worship

- \_\_\_\_\_ Committee Member
- \_\_\_\_\_ Altar Server
- \_\_\_\_\_ Art/Environment
  - \_\_\_\_\_ Planner
  - \_\_\_\_\_ Assistant
- \_\_\_\_\_ Children's Liturgy Assistant
- \_\_\_\_\_ Eucharistic Adoration
- \_\_\_\_\_ Eucharistic Minister
  - \_\_\_\_\_ at Mass
  - \_\_\_\_\_ home/hospital
- \_\_\_\_\_ Instrumentalist
- \_\_\_\_\_ Lector/Speaker
- \_\_\_\_\_ Occasional Altar Cleaning
- \_\_\_\_\_ Usher/Minister of Hospitality
- \_\_\_\_\_ Vocalist
  - \_\_\_\_\_ Choir Member
  - \_\_\_\_\_ Cantor



## Human Concerns

- \_\_\_\_\_ Committee Member
- \_\_\_\_\_ Construction/Maintenance
- \_\_\_\_\_ Environmental Concerns Advocacy
- \_\_\_\_\_ Fund Allocation Team Member
- \_\_\_\_\_ Justice Advocacy
- \_\_\_\_\_ Meal Service
- \_\_\_\_\_ Meal Preparation
- \_\_\_\_\_ Food/Clothing
  - \_\_\_\_\_ Sorting and distribution
- \_\_\_\_\_ Transportation
  - \_\_\_\_\_ People
  - \_\_\_\_\_ Items (clothing, food etc)
- \_\_\_\_\_ Mentor/Tutor Parish-Sponsored
  - \_\_\_\_\_ Refugee Family
- \_\_\_\_\_ Yard Work/Snow Removal
- \_\_\_\_\_ Other Human Concerns Interest(s)



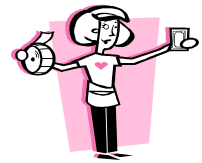
## School

- \_\_\_\_\_ School Board Committee
- \_\_\_\_\_ Health Clinic Attendant
  - \_\_\_\_\_ Morning shift
  - \_\_\_\_\_ Afternoon shift
- \_\_\_\_\_ Coach sport \_\_\_\_\_ sport



## Parish Events

- \_\_\_\_\_ Committee Member
- \_\_\_\_\_ Program/Event Coordinator
- \_\_\_\_\_ Advertising/Underwriting
- \_\_\_\_\_ Baking
- \_\_\_\_\_ Calligraphy/Printing
- \_\_\_\_\_ Children's Games/Activities
- \_\_\_\_\_ Decorations
- \_\_\_\_\_ Event advertising/PR
- \_\_\_\_\_ Finance/Money Collection
- \_\_\_\_\_ Food
  - \_\_\_\_\_ Menu Planning
  - \_\_\_\_\_ Purchasing
  - \_\_\_\_\_ Preparation
  - \_\_\_\_\_ Serving
- \_\_\_\_\_ Mailing Assistant
- \_\_\_\_\_ Making Phone Calls
- \_\_\_\_\_ Music and Entertainment Coordinator
- \_\_\_\_\_ Raffle/Auction Coordinator
- \_\_\_\_\_ Set-up/Clean-up help
- \_\_\_\_\_ Sewing/Quilting



I would like to be involved in the following parish events:

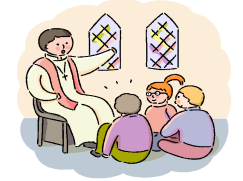
- \_\_\_\_\_ Spaghetti Dinner \_\_\_\_\_ Fish Fry
- \_\_\_\_\_ Antique Show \_\_\_\_\_ Parish Festival

**Return completed form to  
St Monica Parish Office  
160 E Silver Spring Dr.**

Email: \_\_\_\_\_

## Christian Formation

- \_\_\_\_\_ Committee Member
- \_\_\_\_\_ RCIA Team Member
- \_\_\_\_\_ RCIA Sponsor



## Child Ministry

- \_\_\_\_\_ Catechist
- \_\_\_\_\_ Co-Catechist

## High School/Confirmation

- \_\_\_\_\_ Adult Driver for Events/Activities
- \_\_\_\_\_ Home Meeting Host/Hostess
- \_\_\_\_\_ Small Group Advisor
- \_\_\_\_\_ Teen Website Coordinator
- \_\_\_\_\_ Winter Xcursion/Retreat Group Leader

## Young Adult

- \_\_\_\_\_ Childcare Provider for MOPS meetings
- \_\_\_\_\_ MOPS Planning Team Member

## Communication and Administrative Services

- \_\_\_\_\_ Communication Committee Member
- \_\_\_\_\_ Bulletin Stuffer
- \_\_\_\_\_ Mailing Assistant (as needed)
- \_\_\_\_\_ Parish Office Assistant (as needed)
- \_\_\_\_\_ St Monica Voice Writer
- \_\_\_\_\_ St Monica Website Assistant
  - \_\_\_\_\_ Design
  - \_\_\_\_\_ Data Entry

